

PLASTIC PUSH PULL PLUG CONFIGURATOR :

PL A 3 X X X X X X X X

Plastic latch

A3=Straight Plug with cable collet and nut for fitting a bend relief
 ----SOLDER CONTACT

OUTER SHELL MATERIAL
 G=GREY PSU(STANDARD) F=BLACK PEI
 B=BLACK PSU P=GREY PEI

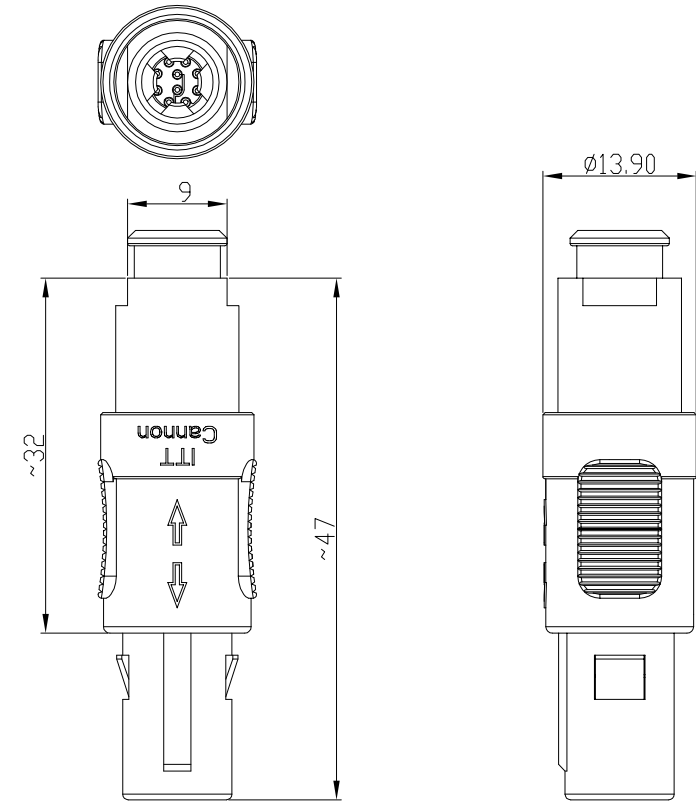
BACK NUT COLOR
 0= BLACK 1= WHITE 2= RED 4= YELLOW
 5= GREEN 6= BLUE 8= GREY

CONTACT PLATING
 2= GOLD PLATING, 20u''

NUMBER OF CONTACTS
 02=2 PIN 04=4 PIN
 03=3 PIN 05=5 PIN
 06=6 PIN 08=8 PIN
 07=7 PIN 09=9 PIN
 10=10 PIN 14=14 PIN

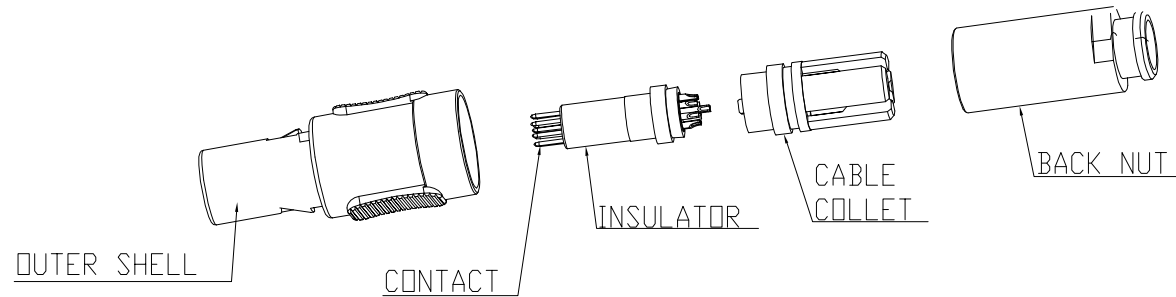
CODING
 0=0°(STANDARD)
 A=40° C=60°
 E=80° H=170° J=205°


CABLE COLLET
 1= ϕ 3.9mm (CABLE ϕ =2.7~3.9mm)
 2= ϕ 5.2mm (CABLE ϕ =4.0~5.2mm)
 3= ϕ 6.5mm (CABLE ϕ =5.3~6.5mm)



NOTES :

- MATERIAL
 OUTER SHELL : HIGH TEMPERATURE PLASTIC,UL94V-0
 INSERT : HIGH TEMPERATURE PLASTIC,UL94V-0
 CONTACT : COPPER ALLOY
 CABLE COLLET : HIGH TEMPERATURE PLASTIC,UL94V-0
 BACK NUT : HIGH TEMPERATURE PLASTIC,UL94V-0
- NUMBER OF CONTACT : 2 TO 14 POSITION
- ALL DIMENSIONS ARE IN MILLIMETERS.
- RoHS DIRECTIVE COMPLIANCE
- BEND RELIEF ORDERED IN SEPERATE

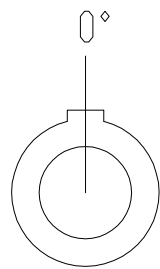


DO NOT SCALE			Total Volume =	Total Surface Area =		PDM:	A3/B
Drawn	DANIEL	08-May-15	Material:	 ITT Industries Cannon Electronics (SZ) Co. Ltd.	Toupandun Industrial Area, Jinda Cheng, Xiner Village, Shajing Town, Baoan District, Shenzhen City PRC 518125		Pro/E Generic Model
Checked	HEROD	08-May-15	Treatment:		Title		Plastic push pull straight plug with cable collet and nut
Engineer.	DANIEL	08-May-15	Dimensions in:	Ref:	Scale 2:1	Sheet 1 of 2	Drwg. No. CU-132040
Manufact.				Cust Spec No:			iss/rev A
Assembly				This is issued in strict confidence on condition that it is not used as a basis for manufacture or sale and that it is not copied reprinted or disclosed to a third party either wholly or in part without the prior written consent of ITT Industries C 08-May-15			
Quality							
Approvals	Sign	Date					

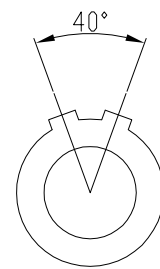
A	INITIAL ISSUE	08-May-15
Iss/Rev	DCN/ECN or Description	Date

VIEW FROM TERMINATION SIDE MALE PART										
	POSITIONS	2 PIN	3 PIN	4 PIN	5 PIN	6 PIN	7 PIN	8 PIN	9 PIN	10 PIN

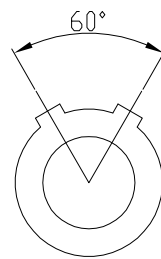
CODING (PLUG FRONT VIEW):



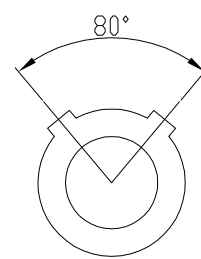
0



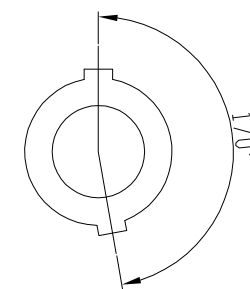
A



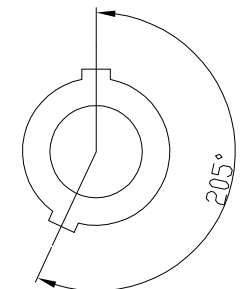
C



E



H



J

DO NOT SCALE			Total Volume =	Total Surface Area =			PDM:	A3/B
Drawn	DANIEL	08-May-15	Material:			Toupandun Industrial Area, Jinda Cheng, Xiner Village, Shajing Town, Baoan District, Shenzhen City PRC 518125	Pro/E Generic Model	
Checked	HEROD	08-May-15					Title	
Engineer.	DANIEL	08-May-15	Treatment:		Cannon Electronics (SZ) Co. Ltd.	Ref:	Plastic push pull straight plug with cable collet and nut	
Manufact.							Drwg. No.	
Assembly			Dimensions in:	Unless Specified	Cust Spec No:	Scale 2:1	Sheet 2 of 2	CU-132040
Quality								iss/rev
Approvals	Sign	Date	This is issued in strict confidence on condition that it is not used as a basis for manufacture or sale and that it is not copied reprinted or disclosed to a third party either wholly or in part without the prior written consent of ITT Industries C 08-May-15					

A	INITIAL ISSUE	08-May-15
Iss/Rev	DCN/ECN or Description	Date