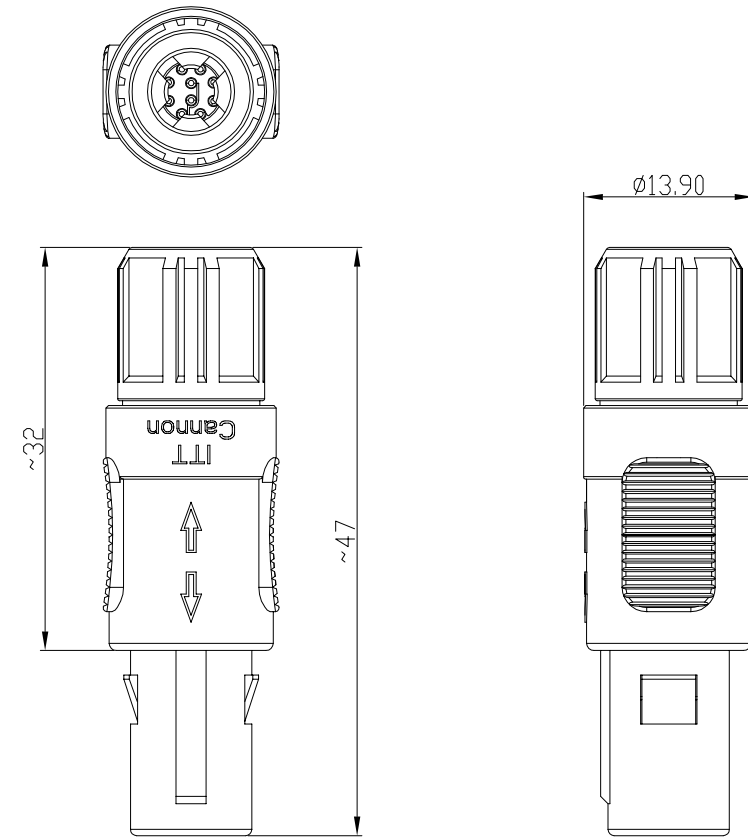


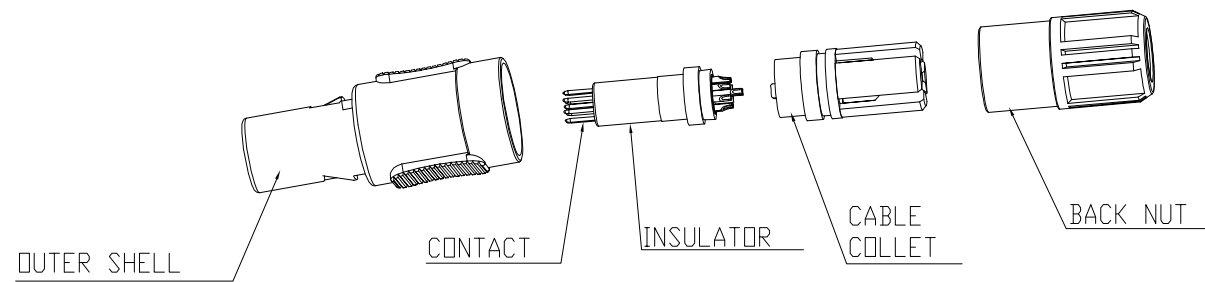
PLASTIC PUSH PULL PLUG CONFIGURATOR :

	PL	A	1	X	X	X	X	X	X	X	
Plastic Latch											
A1=Straight Plug with cable collet											
----SOLDER CONTACT											
OUTER SHELL MATERIAL: G=GREY PSU(STANDARD) F=BLACK PEI B=BLACK PSU P=GREY PEI											
BACK NUT COLOR: 0=BLACK 1=WHITE 2=RED 4=YELLOW 5=GREEN 6=BLUE 8=GREY											
CONTACT PLATING 2= GOLD PLATING 20u"											
						NUMBER OF CONTACTS: 02=2 PIN 04=4 PIN 03=3 PIN 05=5 PIN 06=6 PIN 08=8 PIN 07=7 PIN 09=9 PIN 10=10 PIN 14=14 PIN					
						CODING: 0=0°(STANDARD) A=40° C=60° E=80° H=170° J=205°					
						CABLE COLLET: 1= Ø3.9mm (CABLE Ø=2.7~3.9mm) 2= Ø5.2mm (CABLE Ø=4.0~5.2mm) 3= Ø6.5mm (CABLE Ø=5.3~6.5mm)					



NOTES :

1. MATERIAL
 OUTER SHELL : HIGH TEMPERATURE PLASTIC,UL94V-0
 INSERT : HIGH TEMPERATURE PLASTIC,UL94V-0
 CONTACT : COPPER ALLOY
 CABLE COLLET : HIGH TEMPERATURE PLASTIC,UL94V-0
 BACK NUT : HIGH TEMPERATURE PLASTIC,UL94V-0
2. NUMBER OF CONTACT : 2 TO 14 POSITION
3. ALL DIMENSIONS ARE IN MILLIMETERS.
4. ROHS DIRECTIVE COMPLIANCE

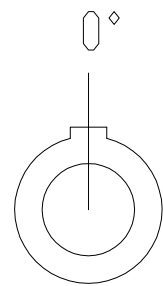


DO NOT SCALE			Total Volume =	Total Surface Area =	PDM:	A3/B	
Drawn	DANIEL	08-May-15	Material: NOTE 1	 3rd ANGLE PROJECTION	 Cannon Electronics (SZ) Co. Ltd.	Toupandun Industrial Area, Jinda Cheng, Xiner Village, Sha Jing Town, Baoan District, Shenzhen City PRC 518125	Pro/E Generic Model
Checked	HEROD	08-May-15					Treatment:
Engineer.	DANIEL	08-May-15	Dimensions in:	 Surface Roughness Unless Specified	Ref:	Scale 2:1	Plastic push pull Straight Plug with cable collet
Manufact.							Cust Spec No:
Assembly							Drwg. No. CU-132039
Quality							iss/rev A
Approvals	Sign	Date					

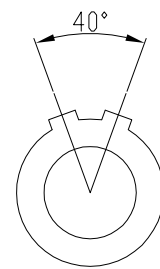
A	INITIAL ISSUE	08-May-15
Iss	DCN/ECN or Description	Date

VIEW FROM TERMINATION SIDE MALE PART										
	POSITIONS	2 PIN	3 PIN	4 PIN	5 PIN	6 PIN	7 PIN	8 PIN	9 PIN	10 PIN

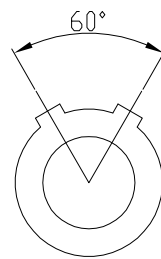
CODING (PLUG FRONT VIEW):



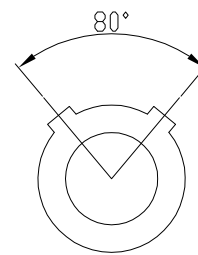
0



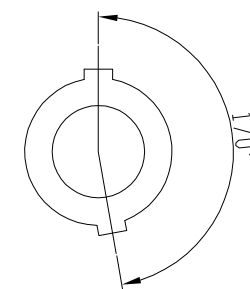
A



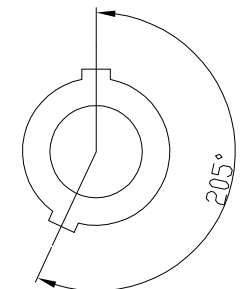
C



E



H



J

DO NOT SCALE			Total Volume =	Total Surface Area =			PDM:	A3/B
Drawn	DANIEL	08-May-15	Material:			Toupandun Industrial Area, Jinda Cheng, Xiner Village, Shajing Town, Baoan District, Shenzhen City PRC 518125	Pro/E Generic Model	
Checked	HEROD	08-May-15					Title	
Engineer	DANIEL	08-May-15	Treatment:		Cannon Electronics (SZ) Co. Ltd.	Ref:	Plastic push pull Straight Plug with cable collet	
Manufact.							Drwg. No.	
Assembly			Dimensions in:	Unless Specified	Cust Spec No:	Scale 2:1	Sheet 2 of 2	CU-132039
Quality								
Approvals	Sign	Date	This is issued in strict confidence on condition that it is not used as a basis for manufacture or sale and that it is not copied, reprinted or disclosed to a third party either wholly or in part without the prior written consent of ITT Industries. C 08-May-15		A			

A	INITIAL ISSUE	08-May-15
Iss/Rev	DCN/ECN or Description	Date